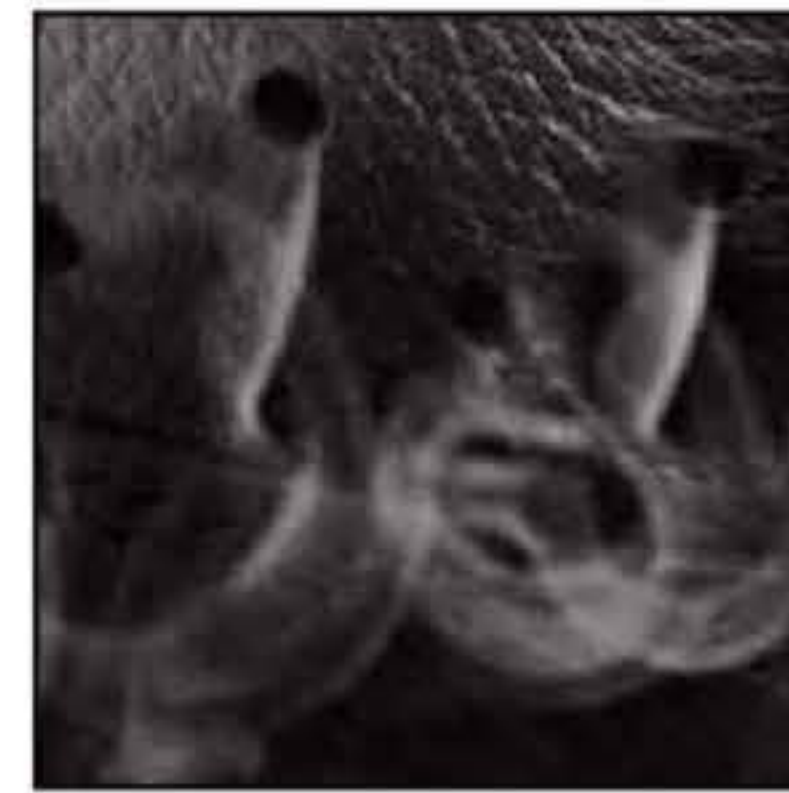


603111



HAIX® Climate System



HAIX® 2-Zone Lacing



Easy-Roller



ASTM F2413-2011, CAN/CSA Z195-2014

Color: signal red, HAIX® Secura Liner, HAIX® Climate System, Protective Toe Cap, sole puncture resistance, class 2 protective cut-resistance, HAIX® 2-Zone Lacing, leg height: 8 inches, VIBRAM 050 sole
Available sizes: Men 6 - 14 & half sizes



HAIX® Secura Liner®

Footwear inner liner which will never pull out or wrinkle up over time; lining is firmly secured and sealed along with the upper leather beneath the sole.

HAIX® Climate System

HAIX Climate system with Micro-Dry lining releases hot air through vent holes at the top of the boot, keeping the foot cool in all conditions.

Protective Toe Cap

Anatomically formed and well-padded steel protective toe cap.

Cut Protection

Para-aramid cut protection.

Puncture Resistant Midsole

Puncture resistant, non-metallic, to meet ASTM F2413-11 and CAN/CSA Z195-2014 standard for personal protection – protective footwear. Combined with the insole.

Insole

Non-woven insole absorbs sweat and moisture.

Upper Material

Velour leather, hydrophobic and breathable

Moisture Barrier

GORE-TEX® footwear, 4 layers with inner Cambrelle lining, abrasion resistant, softly padded with functional non-woven fabric. Waterproof, breathable, and chemical resistant.

Sole

Sturdy VIBRAM rubber/PU anti-slip sole with rugged profile, abrasion-proof. The lightweight PU cushioning guarantees excellent impact absorption and proper toe-to-heel movement. The non-marking outer sole is resistant to heat, oil and gasoline.

Footbed

Anatomically formed, quick change, machine washable insert with excellent moisture absorption and quick drying qualities.

HAIX® 2-Zone Lacing

Two Zone Lacing System allows the wearer to 'lock-off' the fit on the bottom section of the boot, while adjusting the top section.

Other

Anti-friction lacing elements, no side seams, sturdy sole edge, with rubber toe and heel protection for prolonged service life, soft, close fitting leg cuff to prevent debris from entering boot, reflective elements at ankle and heel, Easy-Roller for smoother lacing adjustment

UK	3	3½	4	4½	5	5½	6	6½	7	7½	8	8½	9	9½	10	10½	11	11½	12	12½	13
EU	35	36	37	37	38	39	39	40	41	41	42	43	43	44	45	45	46	47	47	48	48
US	4	4½	5	5½	6	6½	7	7½	8	8½	9	9½	10	10½	11	11½	12	12½	13	13½	14

Surrey Office

17949 Roan Place
Surrey, B.C. V3S 5K1
Phone: 604-594-2701
Fax: 604-594-2751

Calgary Office

14, 6325 - 11 Street SE
Calgary, AB, T2H 2L6
Phone: 403-243-1900
Fax: 403-243-2063

Winnipeg Office

1103 Keewatin Street
Winnipeg, MB, R2X 2Z3
Phone: 204-783-9771
Fax: 204-783-8951

Mississauga Office

7015 Ordan Dr. Unit #2
Mississauga, ON, L5T 1Y2
Phone: 905-564-5344
Fax: 905-564-5354

