

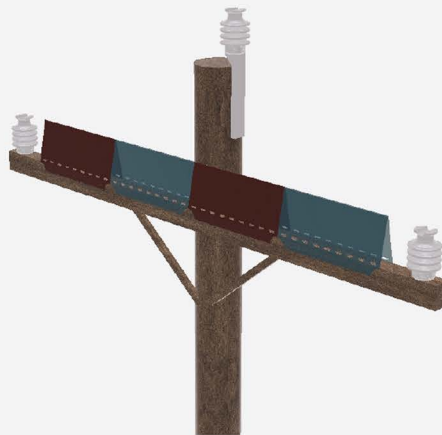
ADJUSTABLE NEST DIVERTER



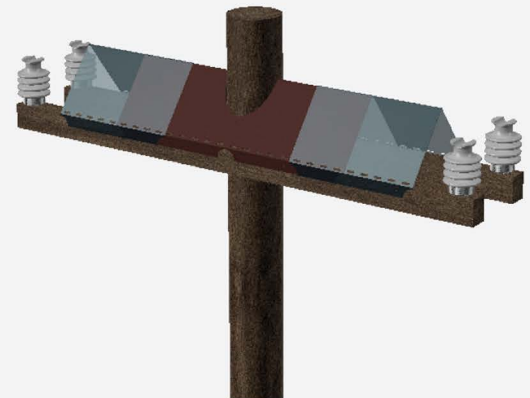
The Power Line Sentry adjustable Nest Diverter effectively sheds sticks and deters nesting ability. Especially useful with Ospreys and Eagles. This product line was developed after an initial third party study showed this style of diverter provided a 100% efficacy rate.

**ADJUSTS
FOR
TIGHT
FIT**

SINGLE CROSS ARM
RGNS-24-48S



DOUBLE CROSS ARM
RGNS-24-43



- > Adjustable design provides for the perfect fit on a variety of lengths
- > Inverted "V" shape sheds sticks to prevent nesting ability
- > Diverts nesting to other structures, even when past nesting activity has occurred in the location
- > Independent studies have highlighted effectiveness of the Power Line Sentry Nest Diverter system
- > Sleek and durable UV resistant HDPE polymer
- > Available in single or double arm widths
- > Adjustable design includes optional pole cut out fitment if needed
- > Easy to attach with super strap banding or screws

Surrey Office

17949 Roan Place
Surrey, B.C. V3S 5K1
Phone: 604-594-2701
Fax: 604-594-2751

Calgary Office

14, 6325 - 11 Street SE
Calgary, AB, T2H 2L6
Phone: 403-243-1900
Fax: 403-243-2063

Winnipeg Office

1103 Keewatin Street
Winnipeg, MB, R2X 2Z3
Phone: 204-783-9771
Fax: 204-783-8951

Mississauga Office

Unit #1 - 171 Ambassador Dr.
Mississauga, ON, L5T 2J1
Phone: 905-564-5344
Fax: 905-564-5354

